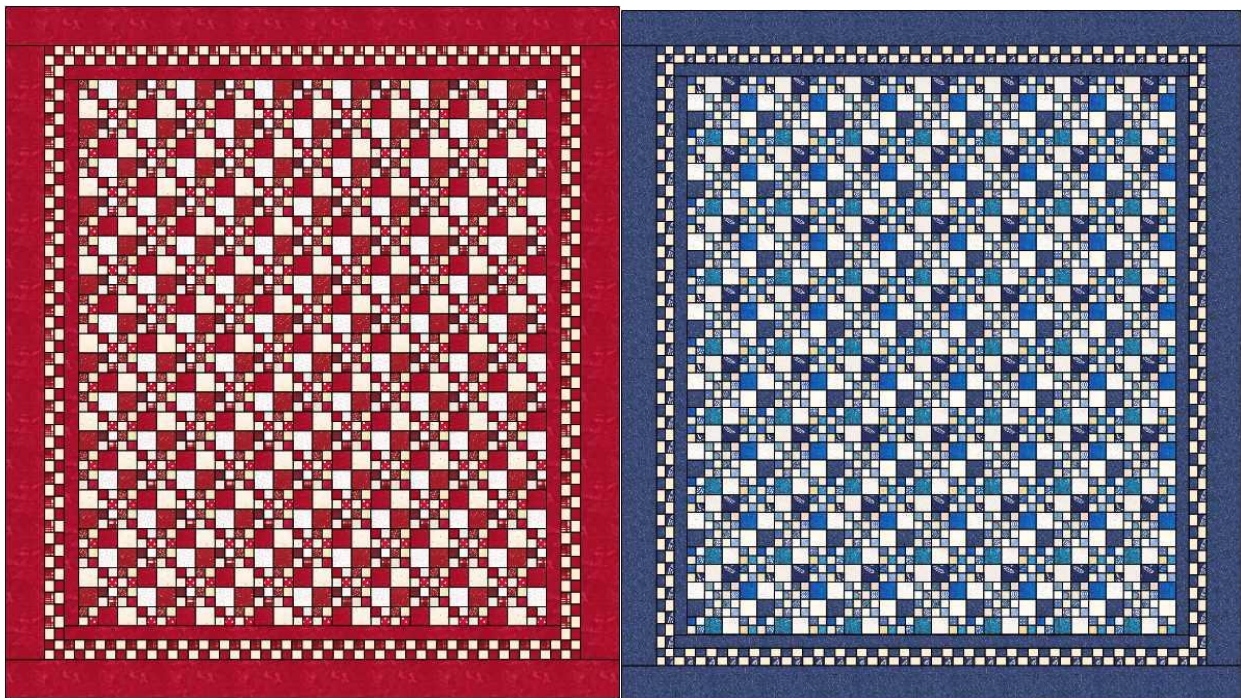


Scrappy Canadian Double Four Patch Quilt

I had a drawer full of 1.5 and 2.5 squares that needed to be used up. I really wanted to make a red and white quilt but I wanted more “sparkle” to it than a two colour quilt would normally have so decided to dig into my scrap drawers and I pulled all of the red, white, and cream fabrics I had in the drawers. In some cases I also grabbed some 1.5 and 2.5 inch strips to make up more variety of fabrics.

As mentioned this is a scrap quilt and although I made it using red, white and cream fabrics you could make it in any two colours or multi coloured with your white and cream. All versions would look great!



Quilt Dimensions

63 x 71 inches

6 Blocks Across by 7 Blocks Down

42 8 inch Blocks

Fabric Requirements

This is a scrap quilt so I don't have any yardage specified out for the blocks and the checkered border

Blocks

For the 42 8 inch block you will need the following from scraps

672 1.5 inch coloured squares (in my case I used red)

672 1.5 inch white/cream squares

168 2.5 inch coloured squares

168 2.5 inch white/cream squares

Checkered Border

You will need 110 4 inch 4 patch blocks for the checkered border

220 1.5 inch coloured squares

220 1.5 inch white/cream squares

Inner Border, Outer Border and Binding

1.75

Backing

4 metres

Batting

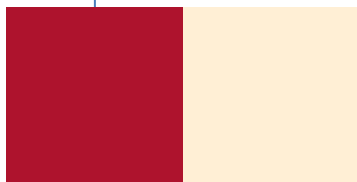
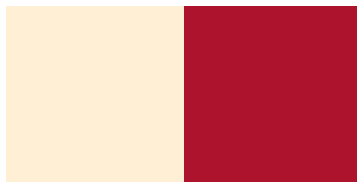
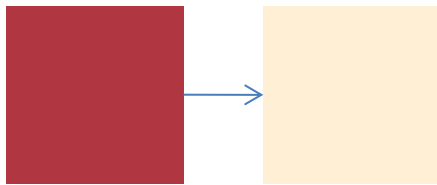
71 x 79

Making the Blocks

Four Patches

You will need to make 446 Four Patch Blocks. It seems like a lot however they go quickly especially if you make them in between other projects. These little blocks will finish at 2.5 inches

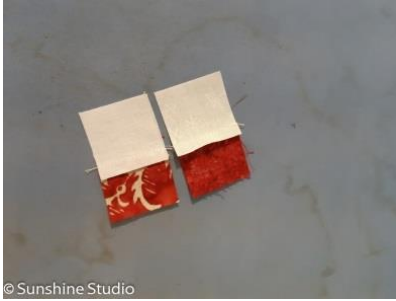
You will need your 1.5 inch squares for both your blocks and checkered border. This will be both red and white.



1. Sew with the darker fabric on top. You can use the lighter on top, doesn't really matter I just like to keep it consistent.



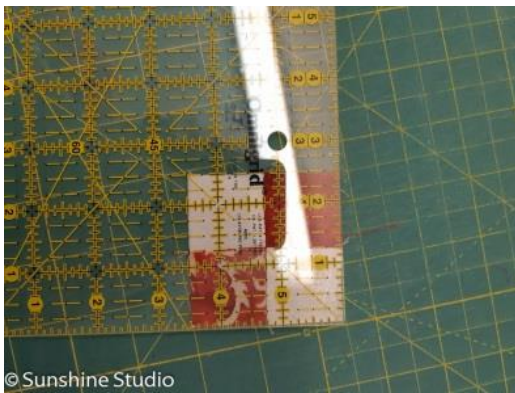
2. Press the seam to the darker fabric



3. Place two pairs together following the above illustration. Make sure your seams are butted up against each other. Sew with the top seam pointing toward the sewing machine. This helps a lot with keeping control so that your seams match up nicely.



4. The units should measure 2.5 inches when pressed.

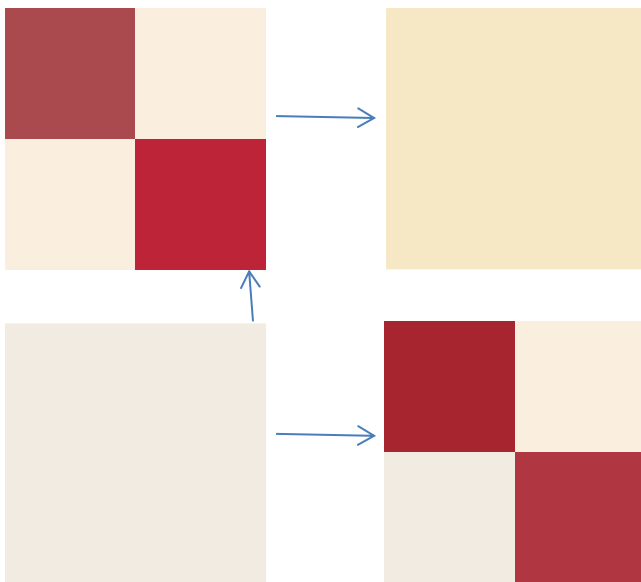


Complete this process until you have 446 4 patch Blocks

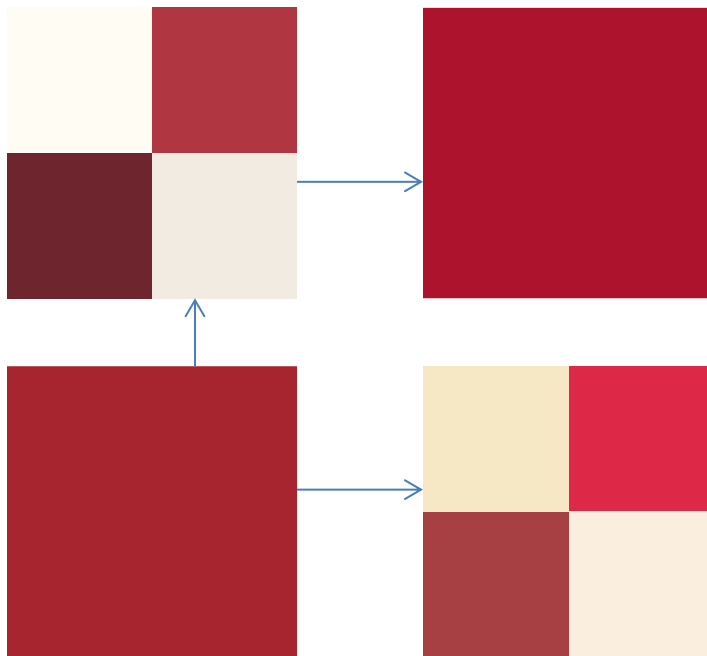
Double Four Patch Units

Once you have all of your 4 patch blocks made it is time to make them into the Double Four Patch Blocks.

1. Set aside 110 four patch blocks for the checkered border.
2. Divide the remaining 4 patch units into two piles. 168 in one and 168 in the other
3. Put your coloured 2.5 inch squares with one pile and your white/cream 2.5 inch squares with the other.
4. Be very careful how you place the four patch units as this is important to get all your coloured squares running down in a line and all your white/cream squares in a separate line.
5. Let's start with making the white/cream units first.
6. Look closely at the illustration below and make sure you are following this exactly.
7. Divide your 168 4 patches into two piles ensuring they look the same as the picture below.
8. You will now have 2 piles of 84
9. Take a 4 patch from 1 pile and place it on top of a white/cream square
10. Sew with the 4 patch on top, continue until you have 84 of these
11. Press to the larger square
12. For the remaining 84 units take a 2.5 inch white/cream square and place it on top of the 4 patch sewing with the square on top. Press to the square.
13. Once you have your two units sewn, sew the two halves together to make your double four patch.
14. Make sure you follow the illustration below carefully.



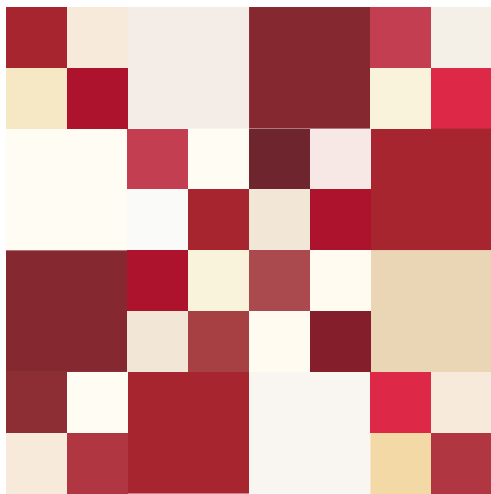
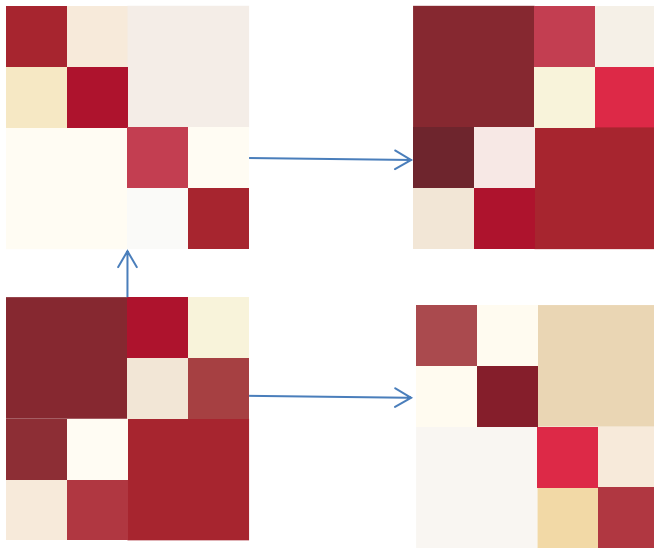
15. Now to move onto the red square units
16. Look closely at the illustration below and make sure you are following this exactly. **Notice how the 4 patches are now in a different orientation!!**
17. Divide your 168 4 patch units into two piles ensuring they look the same as the picture below.
18. You will now have 2 piles of 84
19. Take a 4 patch from 1 pile and place it on top of a coloured square
20. Sew with the 4 patch on top, continue until you have 84 of these
21. Press to the larger square
22. For the remaining 84 units take a 2.5 inch coloured square and place it on top of the 4 patch sewing with the square on top. Press to the square.
23. Once you have your two units sewn, sew the two halves together to make your double four patch.
24. Make sure you follow the illustration below carefully.
25. You should now have 84 white/cream units and 84 coloured units.



Double, Double 4 Patch Units

Now to finish making our 8 inch blocks.

1. Divide your 84 white/cream units and 84 coloured units into two piles of 42
2. Sew one pile with the white/cream on top
3. Sew the second pile with the coloured unit on top
4. You should now have 42 8 inch blocks that look like the illustration below.



Making the Quilt Top

1. Making sure all of your blocks have the correct orientation (see above illustration) you can now sew your blocks together to create your quilt top.
2. Sew the first row using 6 of the blocks.
3. Complete until you have 7 rows
4. Sew the rows together

Adding the Inner Border

1. Measure your quilt top through the centre both width and lengthwise.
2. Cut 6 1.5 inch strips
3. Join as many strips as you need on the diagonal to get the length you need.
4. Cut the strips to match the width measurement first and join to the top and bottom of the quilt.
5. Then measure again through the middle of the quilt top lengthwise and repeat the process adding the strips to the side.

Adding the Checkered Border

1. Sew 26 of the remaining 4 patch blocks together for the top of the quilt
2. Sew 26 together for the bottom
3. Add the row to the top of the quilt top and then to the bottom
4. Sew 29 4 patch blocks together to go down one side of the quilt
5. Sew the remaining 29 for the other side
6. Sew the strips to the quilt top

MAKE SURE YOU GET THE ORIENTATION OF THE 4 PATCH BLOCKS CORRECT. SEE ILLUSTRATION.



Adding the Outer Border

1. Measure your quilt top through the centre for the width
2. Cut 7 strips at 4.5 inches wide
3. Join as many strips as you need on the diagonal to get the length you need.
4. Cut the strips to match the width measurement first and join to the top and bottom of the quilt.
5. Then measure again through the middle of the quilt top lengthwise and repeat the process adding the strips to the side.
6. You now have a completed quilt top

Finishing the Quilt

1. Prepare the backing
2. Sandwich your quilt top whichever method you choose
3. Quilt the top
4. Apply the binding. I use 2 inch binding but I know that is quite small for a lot of people.

